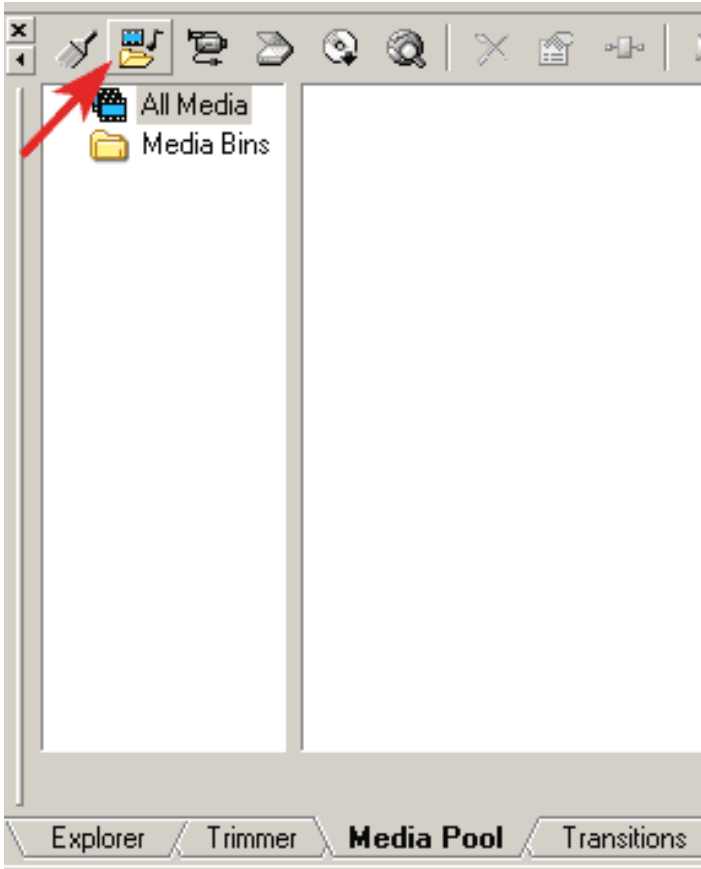
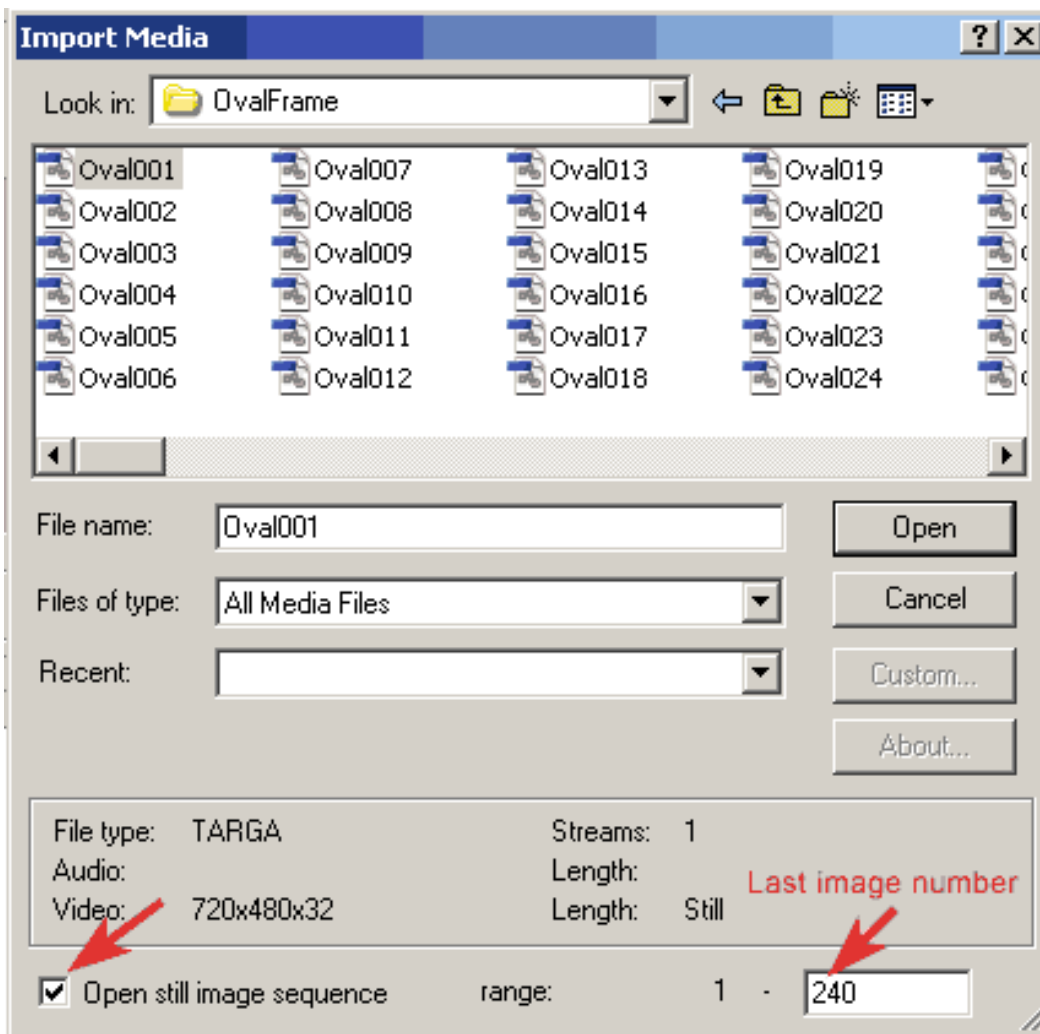


Importing an targa image sequence with an alpha channel in Vegas Video 4.0.

1. Start Vegas. Click on the Import Media button in the Media Pool window

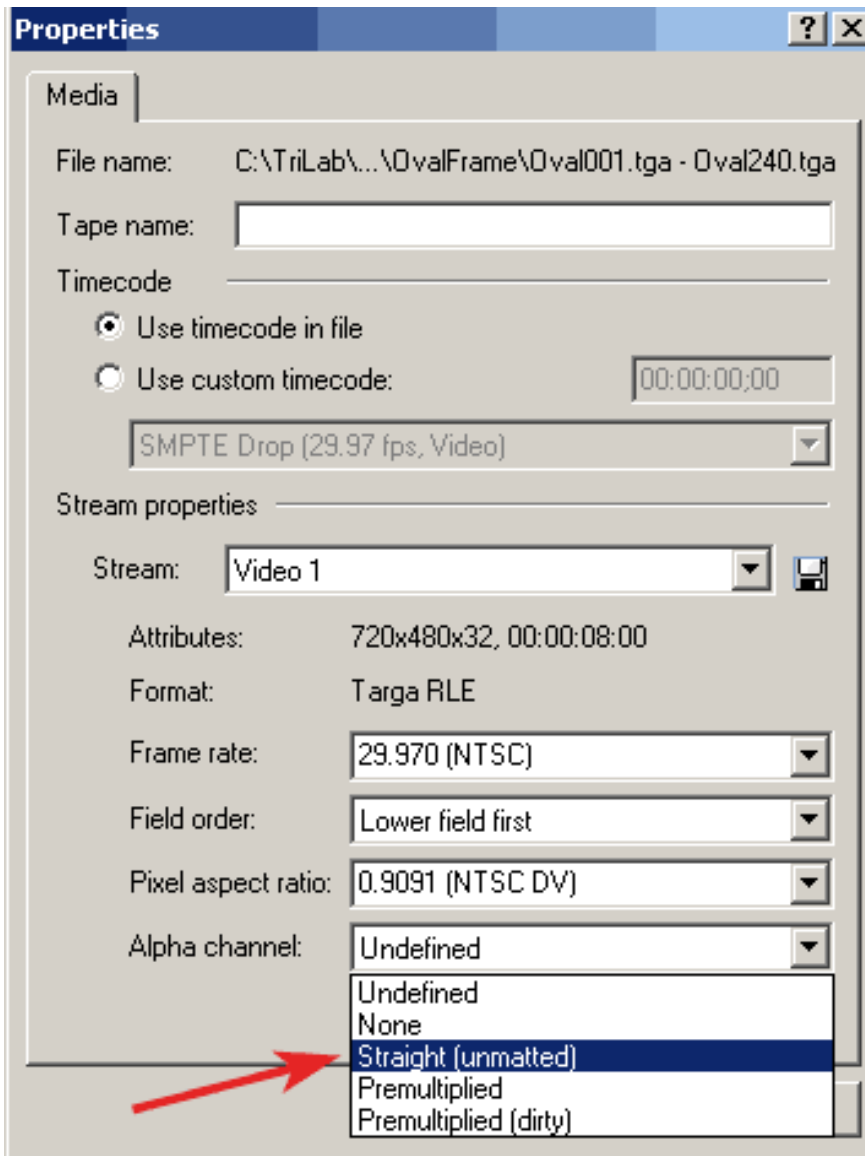


2. Find the folder on your hard drive that contains the image sequence you want to import. Select the first image in the folder and put a check mark in the still-image sequence box. We recommend that you don't import directly from a CD or DVD. Copy content from your disc to your video hard drive first using Windows Explorer.



3. In the RANGE box, enter the number of the last image you want to open. Vegas 4.0 will insert the last image number by default.

4. Click OPEN. A Media Properties panel will display. Select Straight (unmatted) from the pulldown list for Alpha Channel.



5. Click OK. Vegas adds the targa image sequence to the Media Pool.

[Return to Tutorial List](#)