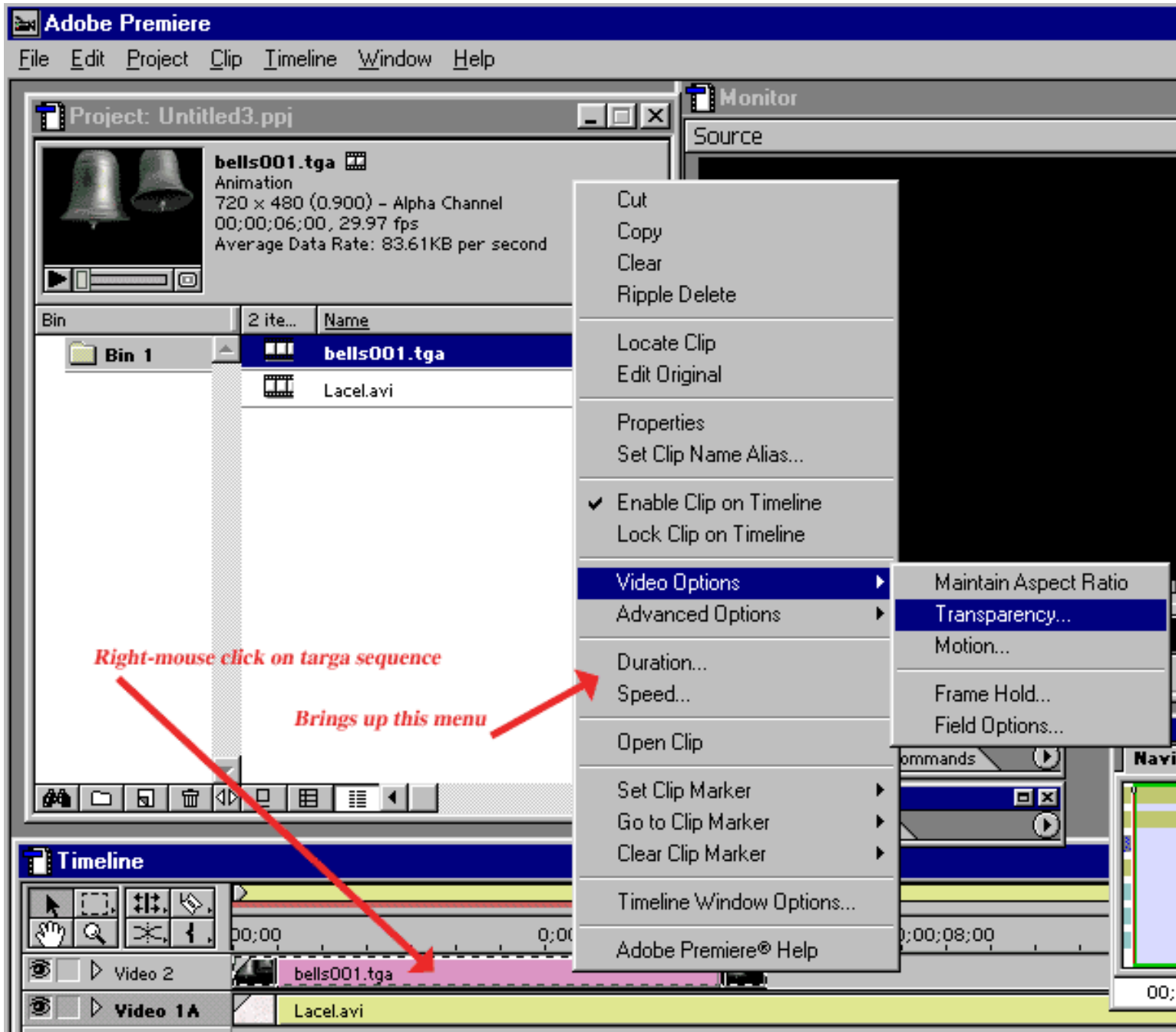
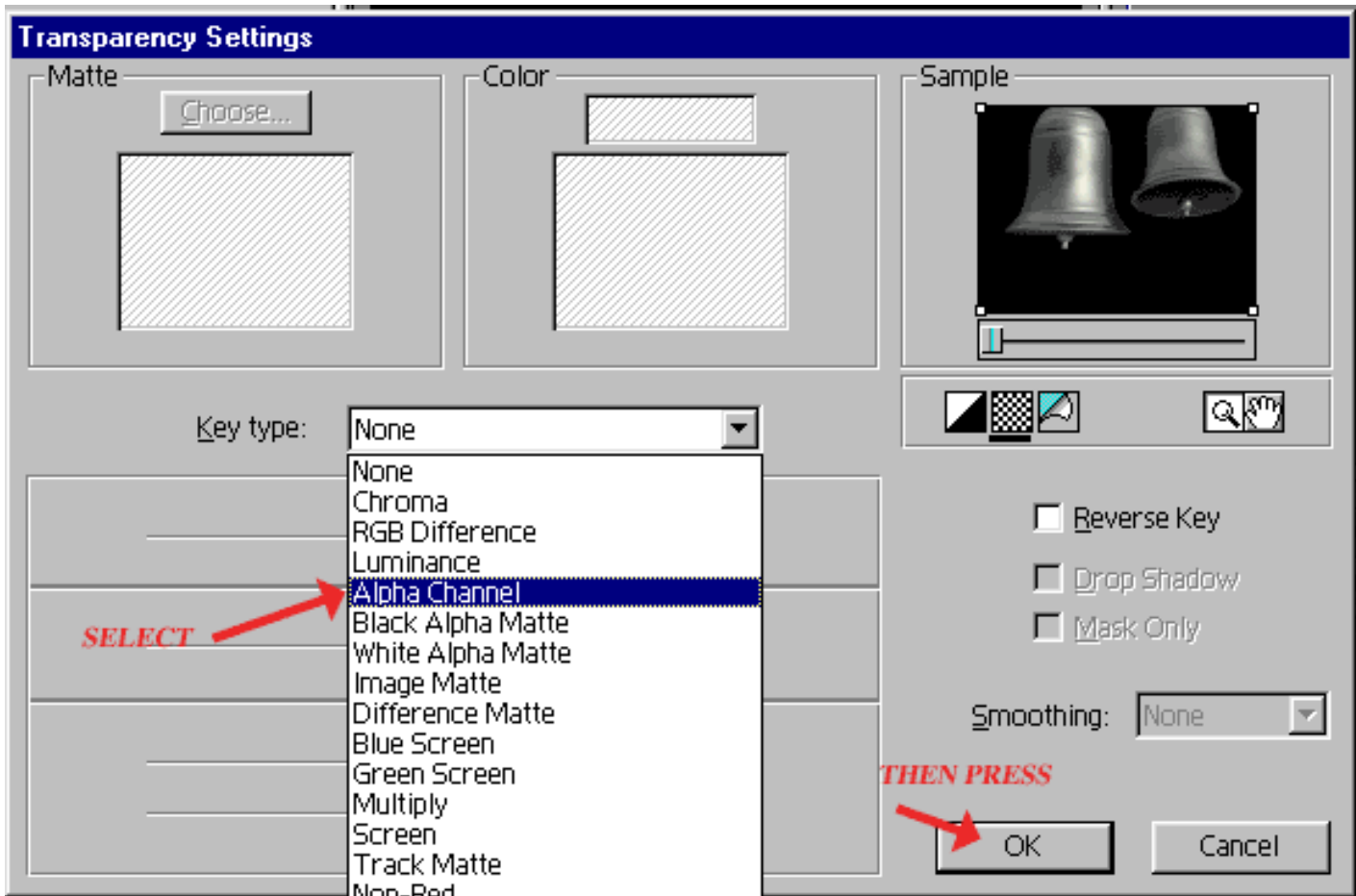


Setting the Transparency setting to alpha channel in Adobe Premiere 5.0 or higher.

1. Right mouse click on the targa image sequence in Video Track 2 to bring up the menu found below. Select Video Options>Transparency



2. Select Alpha Channel from the pull-down list of key types. Then press okay.



3. Render.

[Return to Tutorial List](#)

Copyright © 2002 TriLab Productions. All rights reserved.