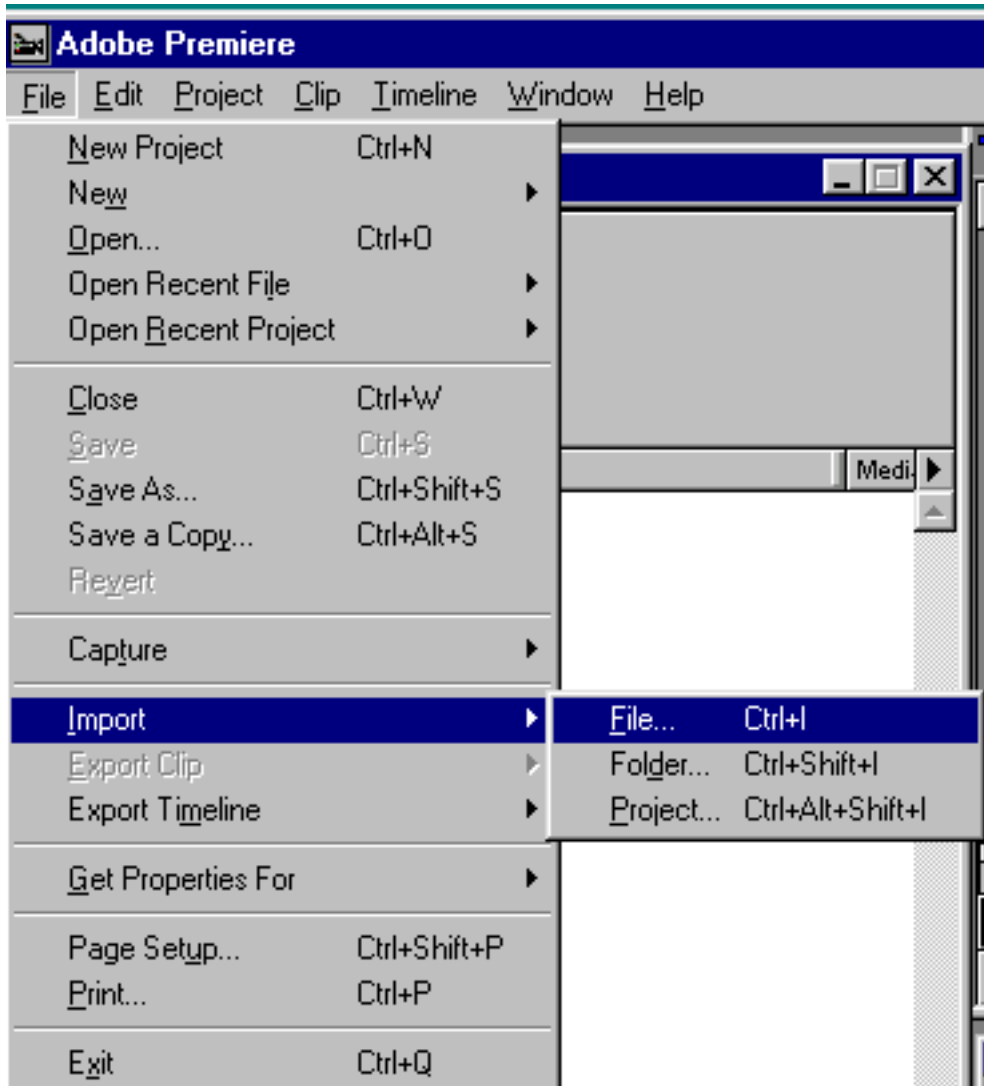
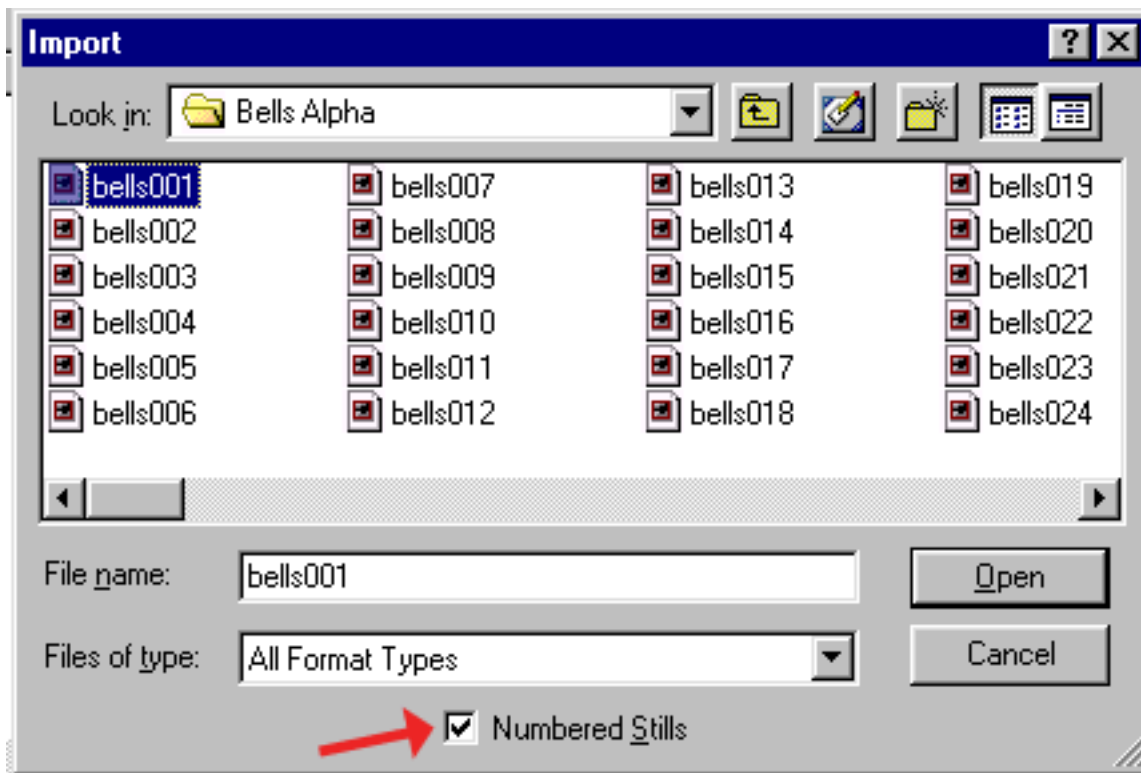


## Importing an image sequence in Adobe Premiere 5.0 or higher.

1. Start Premiere, go under File> Import> File



2. Find the folder on your hard drive that contains the image sequence you want to import. Select the first image in the folder and put a check mark in the number stills box. We recommend that you don't import directly from a CD. Copy content from your CD to your video hard drive first using Windows Explorer.



**3.** The sequence that you selected will now be in your Bin as one clip. Just drag it to the time line of your project. To take advantage of a Digital Hotcakes targa sequence that contains the alpha channel, be sure to drag it to Video Track 2 or higher and **set the transparency settings**. It will require rendering.

[Return to Tutorial List](#)

Copyright © 2002 TriLab Productions. All rights reserved.