

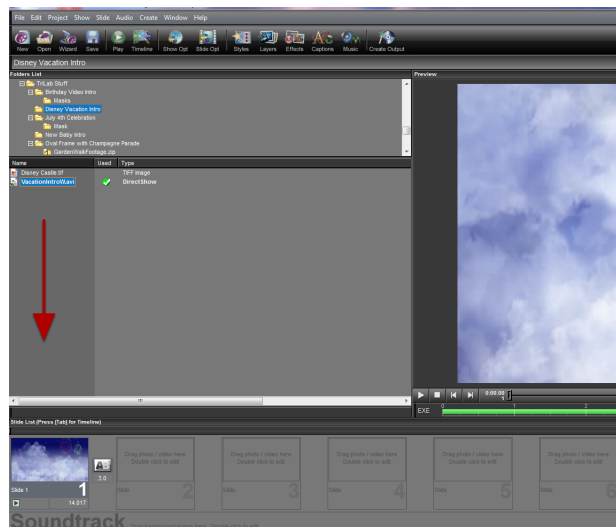
Disney Vacation Intro

Ingredients: VacationIntroW, Your picture of the Disney Castle with blue sky, Your Disney Vacation caption

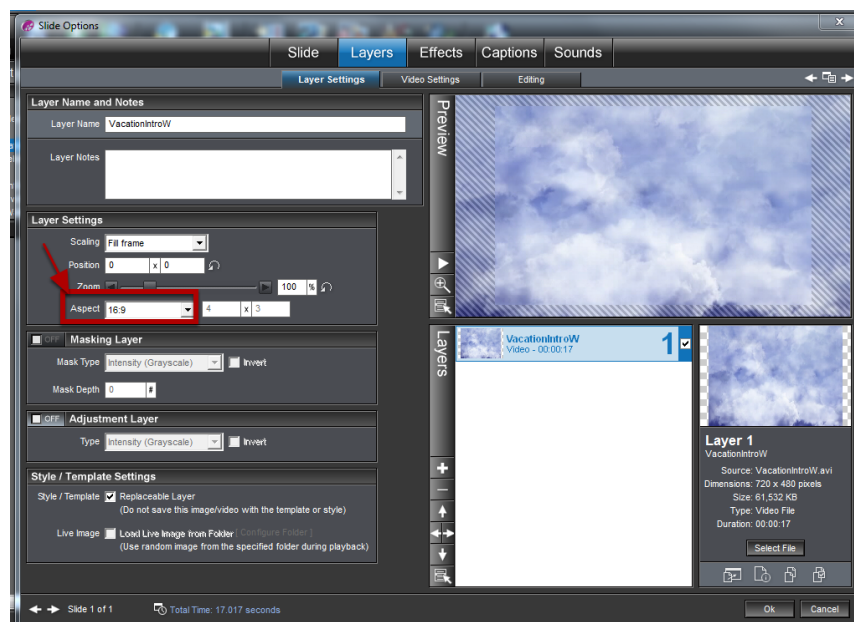
1. Prepare Show Settings for Widescreen.

Under **Show Options>Show Settings**, set **Aspect Ratio** to **16:9**. Under **Edit>Preferences**, set **Default Image Settings** to **Fill Frame**.

2. Drag and drop VacationIntroW into slide.

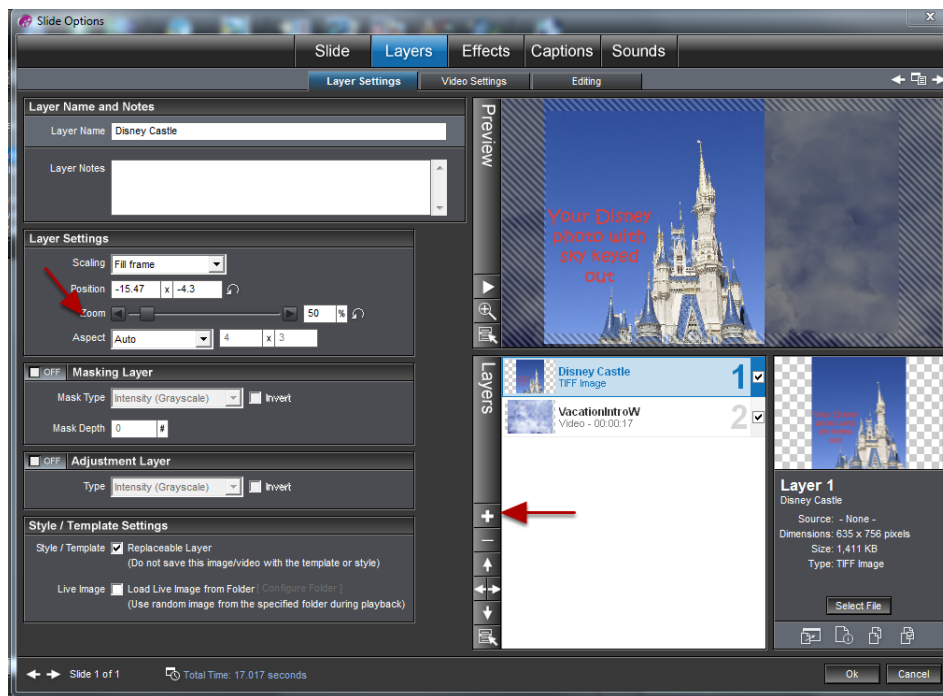


Double click on slide to open **Slide Options**.



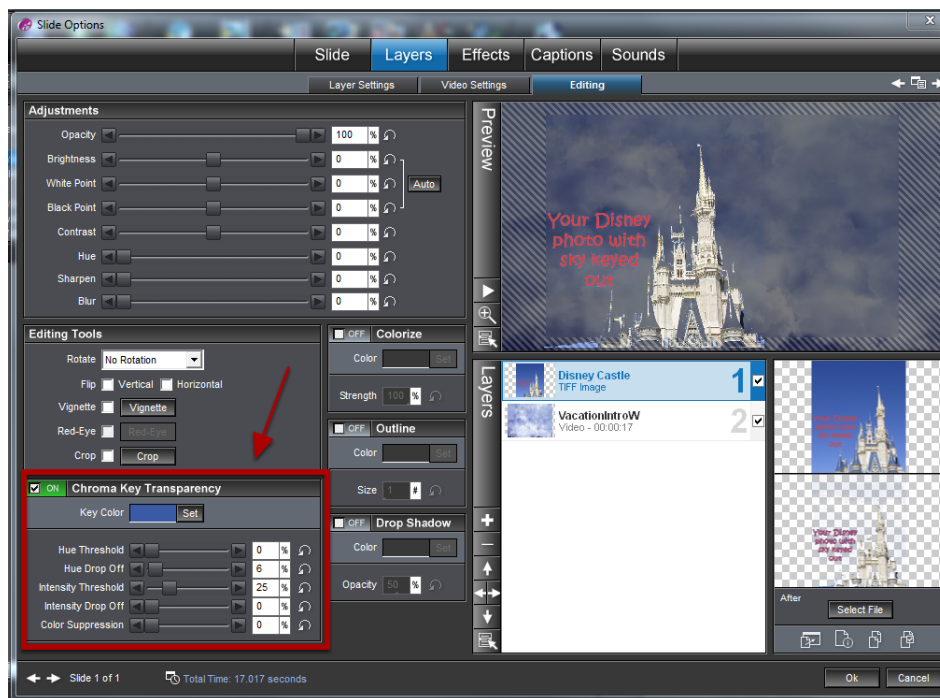
Under **Layers>Layer Settings**, set **Aspect Ratio** to **16:9**. (Though you have your Show Options set for widescreen, ProShow doesn't always recognize imported files as 16:9.)

3. Add your Disney photo.



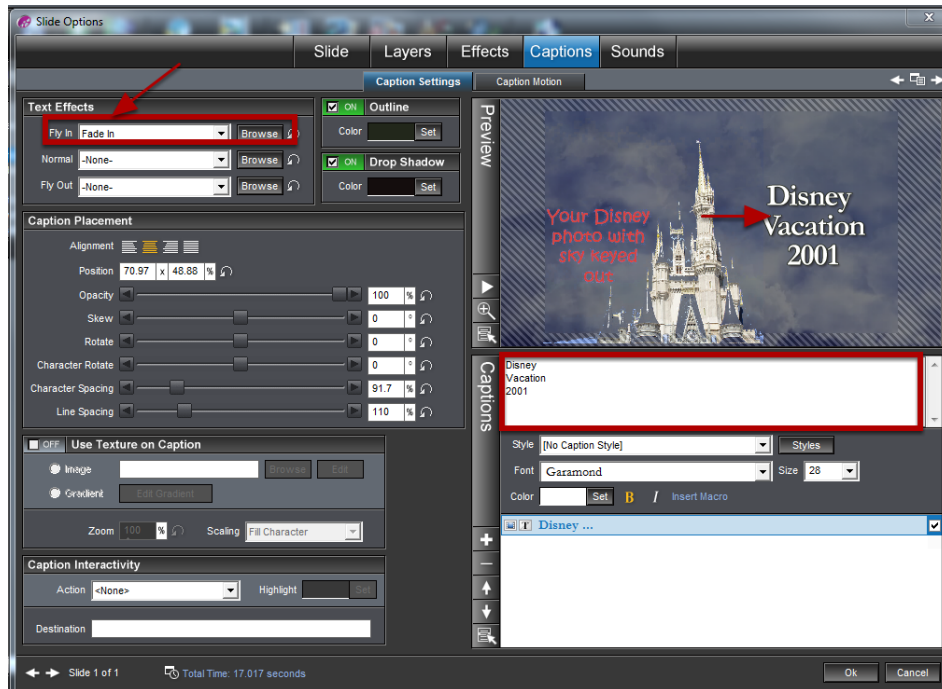
Select **+Add Image or Video**. Resize as needed. Try to place castle toward the middle of the screen. Hold your mouse over the preview window and use your mouse scroll to resize. Drag and move with mouse also. If your mouse doesn't have a scroll, use the **Zoom** control under **Layer Settings**.

4. Key out the blue sky in your photo.



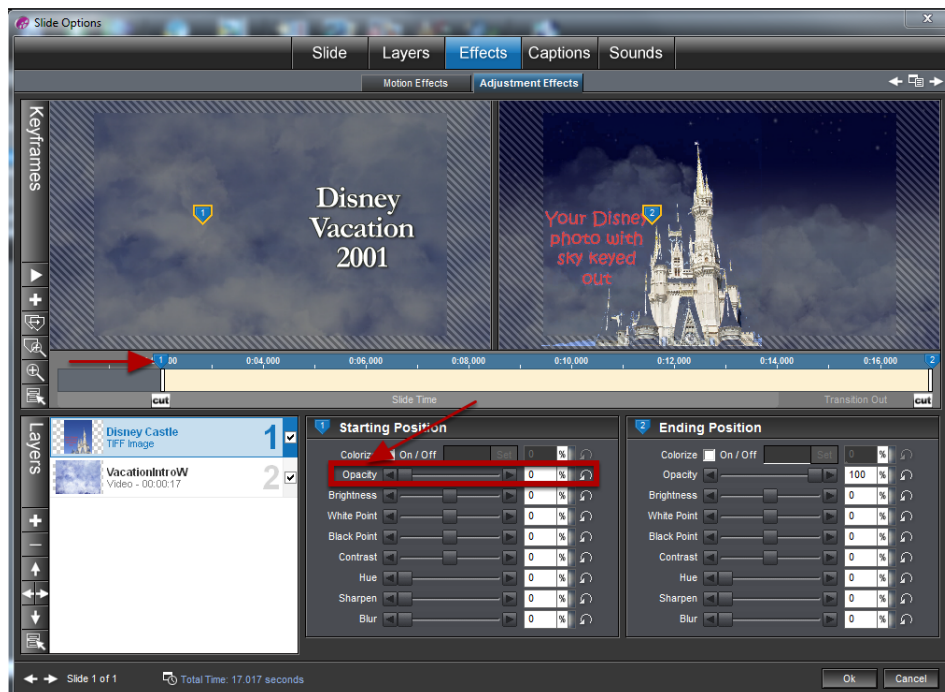
Under **Layer Settings>Editing**, check the **Chroma Key Box**. Select **Key Color Set** and drag "Eyedropper" up to the blue sky in the photo. Adjust the **Hue and Intensity Settings** as needed.

5. Add your vacation caption.

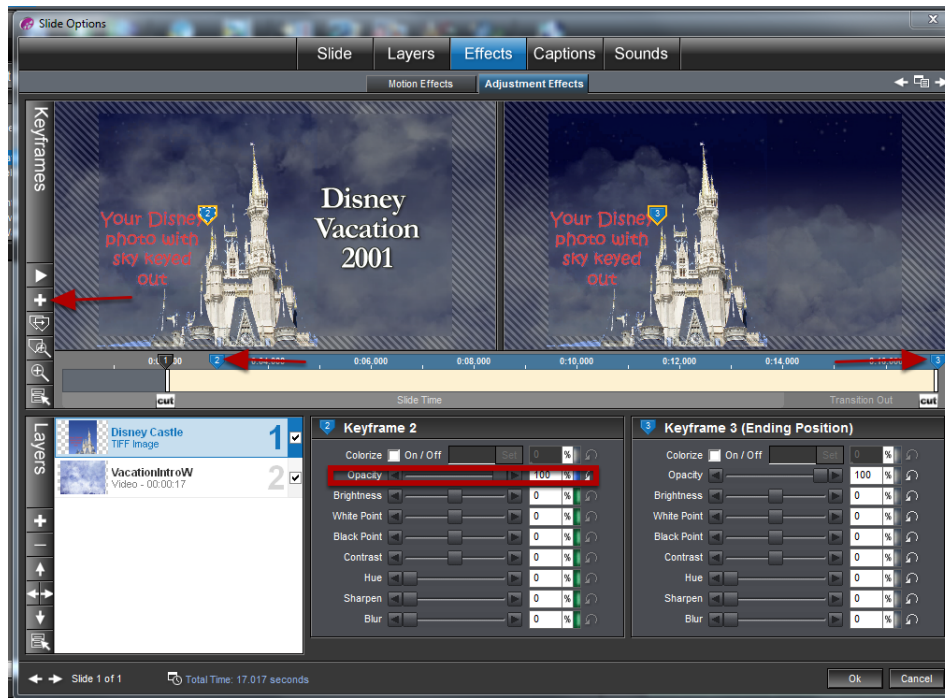


Under **Captions>Caption Settings**, type your caption. Place it to the right of the castle. Under **Text Effects>Fly In**, select **Fade In**.

6. Adjust the timing of the castle photo layer.

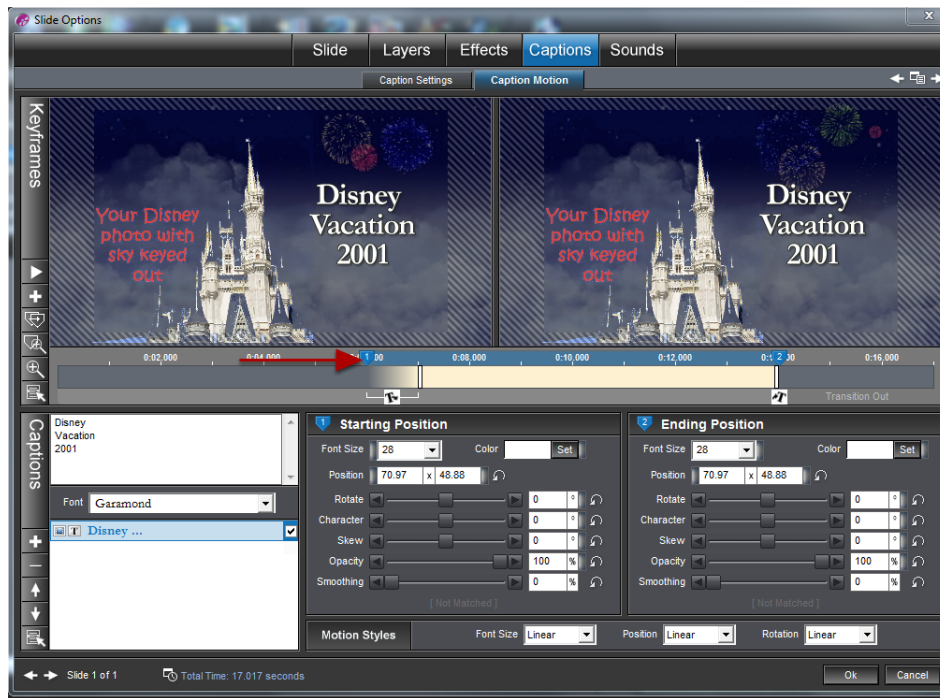


Under **Effects>Adjustment Effects**, select the castle photo layer and right click on **Keyframe 1**. **Select Set Time for this Keyframe** and set time to 2 seconds. Reduce **Opacity** for **Keyframe 1** to 0 %. This will cause our castle to fade up after 2 seconds into the VacationIntro animation.



Right click on **Keyframe 2** and set time to 4 seconds. Set the **Opacity** back to 100%. Then add a keyframe by clicking on the **+** on the **Keyframe** panel. Drag **Keyframe 3** to the end of the time line.

7. Adjust the timing of the caption.



Under **Captions>Caption Motion**, right click on **Keyframe 1** and set time to 6 seconds.

End result will be your castle appearing in the clouds followed by your vacation title.